



Capital Campaign

OUR STORY

1900

Cleveland Christian Home was founded in 1900 when **Rev. Henry Timme**, a pastor in the Christian Church (Disciples of Christ), took in a family of children left on his doorstep. Word spread and others soon followed.

1905

In 1905, Rev. Timme moved the orphanage to the Bosworth farm on Lorain Avenue, and the orphanage expanded to care for **60 children**.

1924

With the help of the church, the farmhouse was replaced with a modern brick building.

1960

By the 1960's, CCH began caring for children who had been victims of abuse or neglect and transformed its orphanage on Lorain Avenue into a **residential treatment center**.

The Cleveland Christian Home for Children came to care for **100 orphans of all ages**.

TODAY

In 2022, CCH formally affiliated with The Centers as a multi-service facility that exists to be a haven of **hope and healing for children, youth, and families** through a holistic approach that connects individuals with the comprehensive resources they need.

THE CRISIS

Today, we face a situation where the safety and well-being of our youth are at risk because of overwhelmed protective systems. For years, **our community has lacked appropriate placements for children in county custody** with insufficient beds and foster families, forcing vulnerable youth with complex requirements into unsuitable systems. As a result, some children are temporarily housed in office buildings or are sent out of state, far from their families and communities. This dislocation makes it significantly more difficult to reunify these children with their families, prolonging their time in the system and complicating their path to healing and stability.

THE CENTERS' SOLUTION

The Centers is partnering with Cuyahoga County on an ambitious capital campaign to create lasting solutions for vulnerable youth.

The new campus, which will be built at the current Cleveland Christian Home (CCH) site on Lorain Avenue on Cleveland's west side, demonstrates The Centers' and the County's commitment to ensuring that youth in County custody have a safe and therapeutic place to stay - especially those who have been turned away from other options. The campus transformation will promote a comprehensive model for assisting with rapid reunification and kinship diversion for youth and families, while providing a safe location where youth awaiting placement can be assessed and treated.

This joint effort will make meaningful progress toward providing a solution for area youth in need of placement outside of their homes.

We believe keeping local youth in Cuyahoga County is our moral obligation and critical to family reunification and engagement. Over time, this program will reduce the number of nights any youth spends without adequate housing and help keep Cuyahoga County youth close to home. In one central location, Centers and County staff, along with other child-serving nonprofits, can work in lockstep to get children who have faced some of life's harshest realities into their best placement as quickly as possible.

The campus will also provide residential treatment, short-term emergency placement, and other support for youth and families. With around 50 specialized beds in a comfortable, trauma-informed environment, youth will have seamless step-down and step-up options as they receive treatment close to home and work toward a path back to their families.



They're all our kids. We live in a community together. If we don't make the investments now to help those kids, it's just going to get worse with each generation.

Eric L. Morse, MSSA, LISW-S
President and CEO





Proposed Campus Renderings

CORE COMPONENTS

1

24/7 CHILD WELLNESS WELCOME CENTER

A central location for all children entering care —co-operated by The Centers and Cuyahoga DCFS—that provides immediate supports.

2

RAPID REUNIFICATION TEAM

Staffed by social workers/counselors and case managers who provide intensive intervention to reunite or prevent separation within 72 hours, with linkage and handoff to ongoing support and treatment.

SPECIALIZED UNITS:

- Emergency Childcare
- Emergency Treatment
- Long-Term Intensive Treatment
- Teen Girl Intensive Treatment
- Psychiatric Residential Treatment
- Flex Open Residential Treatment

SUPPORTERS



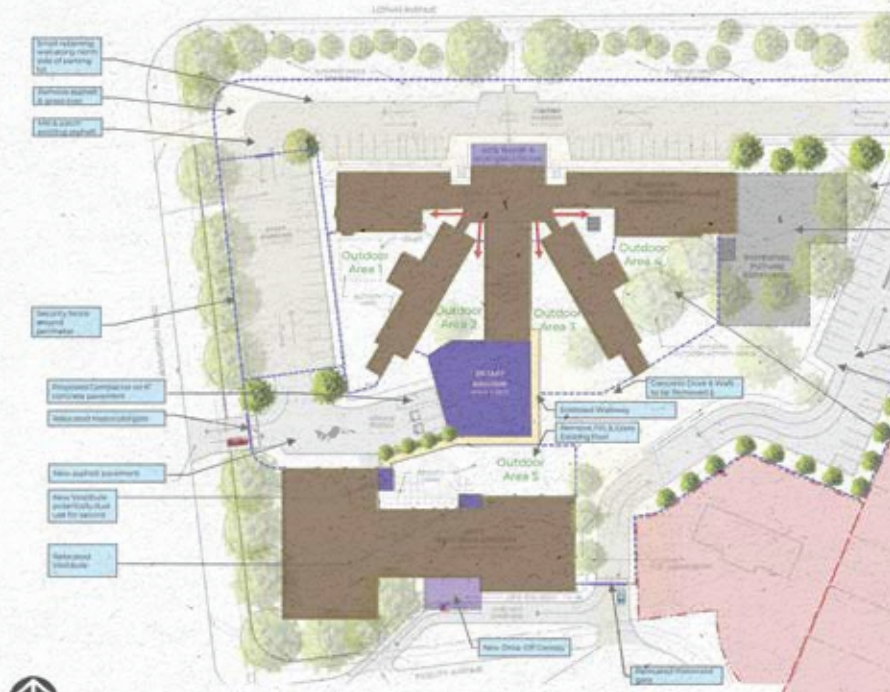
STAKEHOLDERS

- Cuyahoga County Executive Chris Ronayne
- David Merriman, Director, Cuyahoga County Department of Health and Human Services
- Jacqueline Fletcher, Director, Cuyahoga County DCFS
- State Representative Bride Rose Sweeney
- State Senator Tom Patton
- State Representative Terrence Upchurch
- Former State Senator Matt Dolan
- State Senator Jerry Cirino
- State Senator Nickie Antonio
- State Senator Kent Smith
- Cleveland Mayor Justin Bibb
- State Representative Sean Brennan
- State Representative Juanita Brent
- State Representative Darnell Brewer
- State Representative Chris Glassburn
- State Representative Phillip Robinson, Jr.
- State Representative Daniel Troy

PARTNER ORGANIZATIONS

- Cuyahoga County Department of Children and Family Services
- Cuyahoga County Juvenile Court
- Cuyahoga County Board of Developmental Disabilities
- Alcohol, Drug, Addiction, and Mental Health Services Board of Cuyahoga County
- A Place 4 Me
- Bellfaire JCB
- Bluestone
- Boundless
- Cleveland Clinic
- Cleveland Metropolitan School District
- Cleveland Rape Crisis Center
- Collaborative to End Human Trafficking
- CWRU
- FrontLine Service
- KinnectOhio
- MetroHealth
- OhioGuidestone
- Positive Education Program
- The Achievement Centers
- The Canopy Child Advocacy Center
- University Hospitals
- Wingspan Care Group
- YWCA of Greater Cleveland

RENOVATION PLANS



 Proposed Site Plan

FINANCIALS

As of 8/15/25

We need YOUR help.

We cannot complete this project alone. With a remaining gap of **\$1,428,922**, we are asking for your support and partnership to complete this community program.

EXPENSES	TOTALS
School	\$449,549
Kitchen/Cafeteria	\$2,525,926
Welcome Center	\$2,903,832
Administrative Offices and Elevator	\$2,207,930
Site Work/Parking	\$1,403,873
Anti-Ligature/Drywall/Reinforcement	\$1,148,281
TOTAL EXPENSES	\$10,639,391
FF&E	\$2,000,000
Other Fees	\$1,360,609
GRAND TOTAL EXPENSES	\$14,000,000

RENOVATIONS:

- **School**
Relocate from auxiliary building to main building
- **Kitchen/Cafeteria**
Renovate space, upgrade equipment, and bring up to code
- **Welcome Center**
Create 24/7 Child Wellness Welcome Center that provides immediate supports
- **Administrative Offices and Elevator**
Create therapeutic/administrative office spaces and make the facility ADA compliant
- **Site Work/Parking**
Beautify/secure area, expand parking



Construction as of 4/11/25

